

Release of 2024 GCE O-Level Examination Results



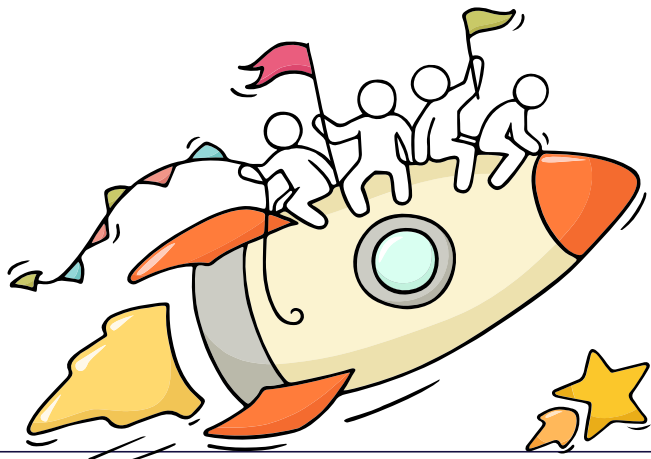
Welcome Back!



YISHUN SECONDARY SCHOOL
We Seek We Strive We Soar

Dear students,

You have worked hard to reach this stage. Let's celebrate our efforts!

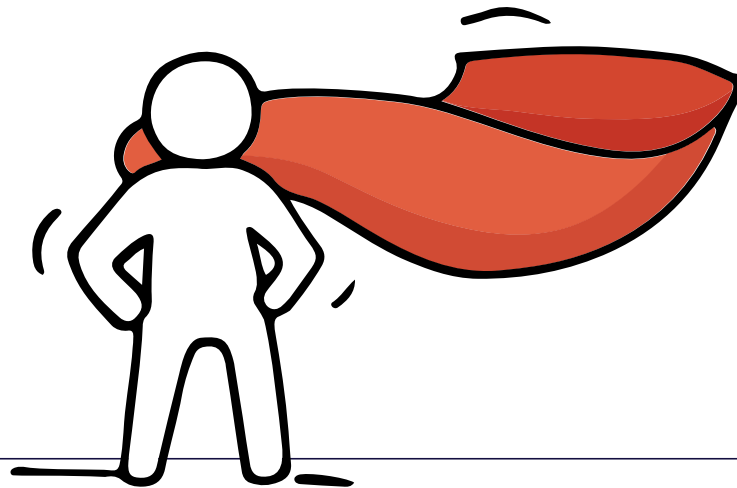


Finally, we are about to receive our results!

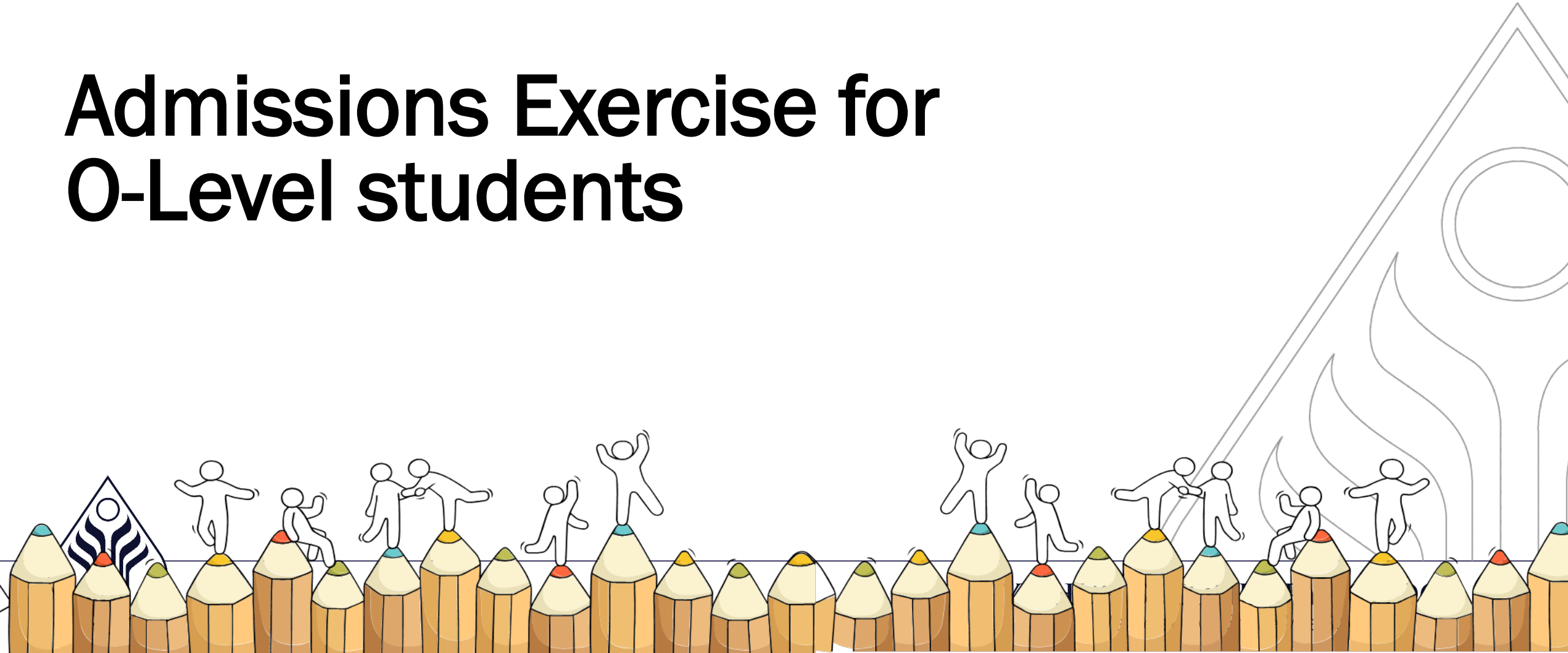


YISHUN SECONDARY SCHOOL
We Seek We Strive We Soar

Remember that while **everyone's educational journey is different, we can each have a fulfilling outcome!**



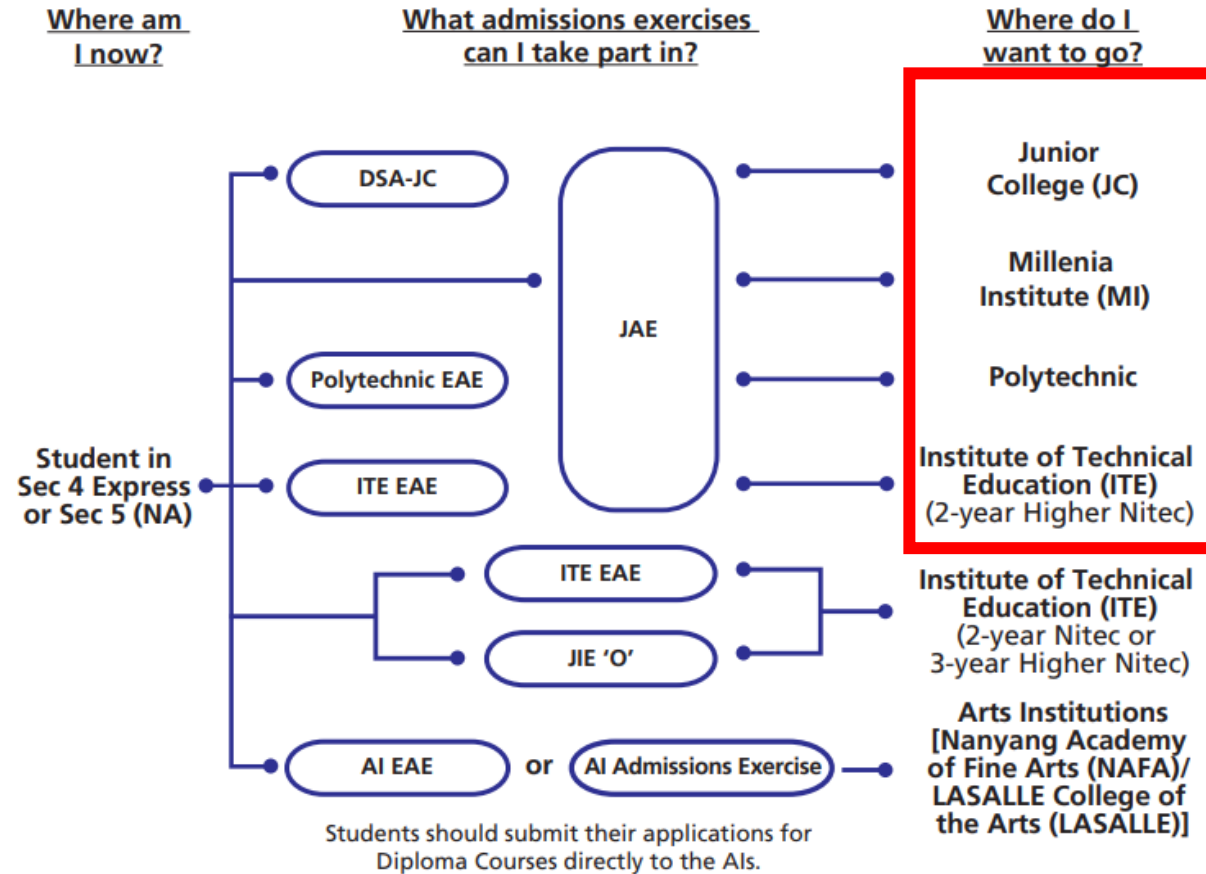
Admissions Exercise for O-Level students



Admissions Exercise for O-Level students

Students who wish to apply for admission to

- junior colleges (JC),
- Millennia Institute (MI), polytechnics, and the
- Institute of Technical Education (ITE) may do so via the **Joint Admissions Exercise (JAE)** using their GCE O-Level examination results.



DSA: Direct School Admission
JAE: Joint Admissions Exercise
AI: Arts Institution

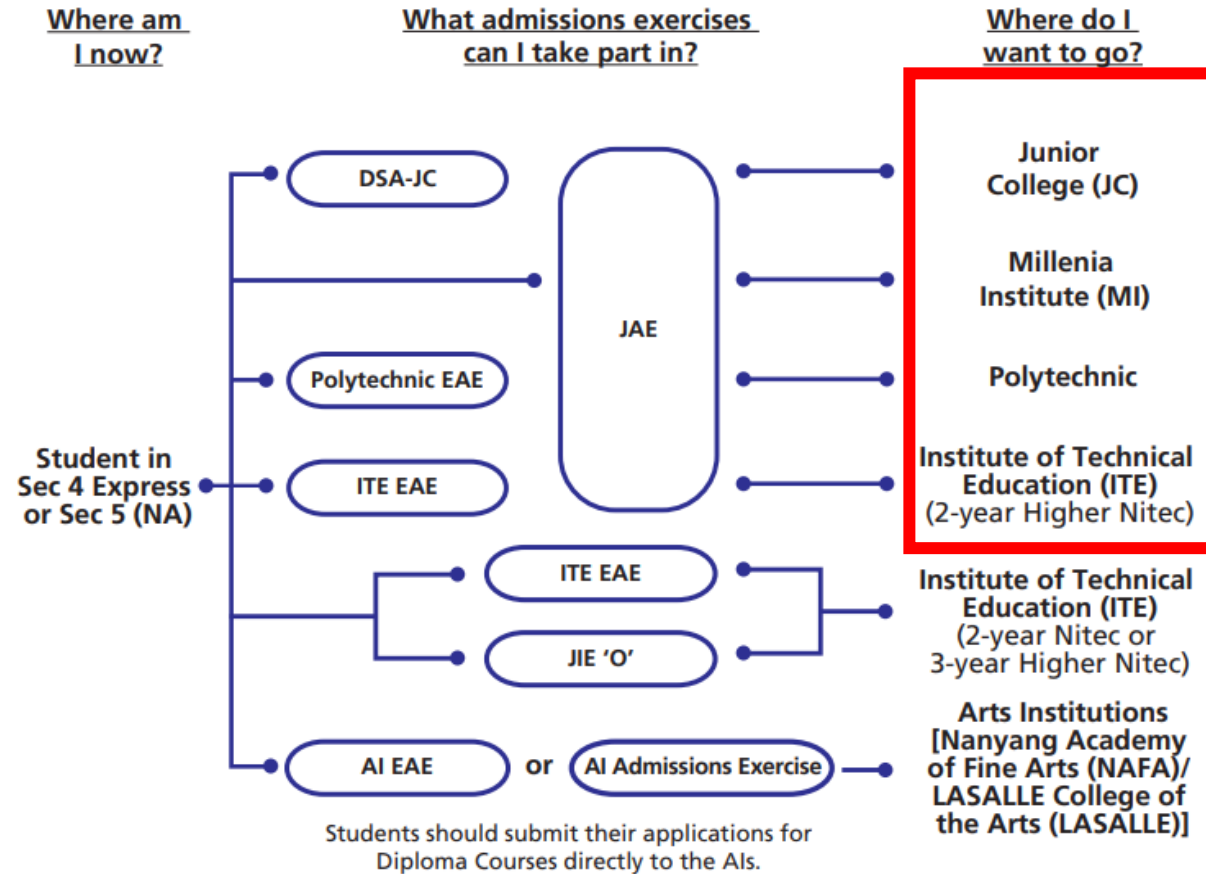
EAE: Early Admissions Exercise
JIE: Joint Intake Exercise



Admissions Exercise for O-Level students

Joint Admissions Exercise (JAE) – Form A

- Eligible school candidates will receive a digital copy of Form A via their registered email addresses on **Friday, 10 January 2025**.
- Form A will list the applicant's gross aggregate scores for JC, MI, Polytechnic, and the courses which he/she is eligible to apply for under the JAE.



DSA: Direct School Admission
 JAE: Joint Admissions Exercise
 AI: Arts Institution

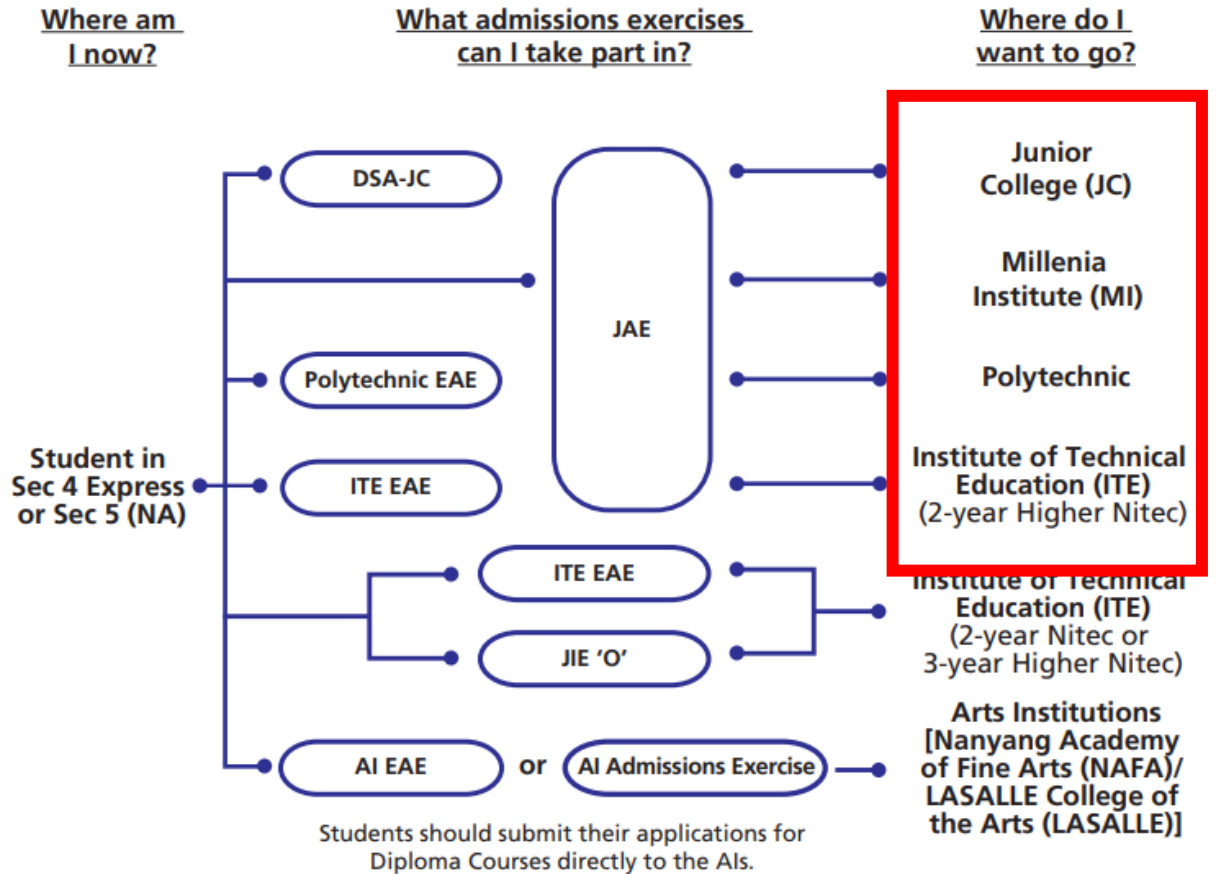
EAE: Early Admissions Exercise
 JIE: Joint Intake Exercise



Admissions Exercise for O-Level students

Joint Admissions Exercise (JAE) – Form A

- All candidates eligible for JAE may also download a copy of Form A from the JAE-Internet System (JAE-IS) during the application period.
- JAE-IS can be accessed using Singpass.



DSA: Direct School Admission
JAE: Joint Admissions Exercise
AI: Arts Institution

EAE: Early Admissions Exercise
JIE: Joint Intake Exercise





Ministry of Education
SINGAPORE

Name	: TEST NAME 111	Centre Index No.	: 2222222217
Address	: 111 BUKIT BATOK EAST AVENUE 1 #11 -11 SINGAPORE 11111111		
School Code	: 1111		

Please apply your course choices by DD/MM/YYYY, 04:00 PM.

Your 20XX GCE O-Level Examination results:

ENGLISH LANGUAGE = A1, HIGHER CHINESE = A1, CHINESE = B3, MATHEMATICS = A2, ADDITIONAL MATHEMATICS = A1, PHYSICS = B3, CHEMISTRY = B4, HUMANITIES (SOCIAL STUDIES, HISTORY) = A1, LITERATURE IN ENGLISH = B3
CCA = EXCELLENT

Subject description and grade obtained

Aggregate types and gross aggregate scores (excluding bonus points)

Your aggregate scores:

JC	MI	Polytechnic				ITE		
L1R5	L1R4	ELR2B2-A	ELR2B2-B	ELR2B2-C	ELR2B2-D	ELB4-A	ELR1B3-B	ELR2B2-C
11	8	8	8	8	8	8	8	8

Your eligible courses:

- You meet the entry requirements for the below courses and are eligible to apply. However, a place in the course is not guaranteed as admission is based on merit, your choices and available vacancies.
- Course codes and descriptions can be found in www.moe.gov.sg/jaecourses.

Explore JAE courses

JC/MI:

You are eligible for all JC/MI courses.

Eligible courses

Polytechnic/ITE:

C27	C28	C29	C30	C31	C32	C34	C35	C36	C38	C41	C42	C43	C45	C46	C47	C49	C50	C51
C52	C54	C62	C65	C67	C69	C70	C71	C72	C73	C75	C80	C81	C85	C87	C89	C93	C94	C96
C97	C98	N11	N12	N13	N14	N15	N40	N41	N42	N43	N44	N45	N48	N50	N51	N53	N54	N55
N56	N57	N59	N60	N65	N67	N69	N71	N72	N73	N74	N81	N82	N83	N85	N88	N91	N93	N94
N96	N97	N98	R11	R12	R13	R14	R16	R17	R18	R19	R21	R22	R24	R25	R26	R28	R32	R33
R34	R35	R36	R37	R39	R40	R42	R43	R45	R46	R47	R48	R49	R50	R52	R54	R55	R56	R57
R58	R59	R60	R61	R62	R63	R64	R65	S28	S29	S30	S31	S32	S38	S40	S42	S47	S48	S50
S53	S54	S63	S64	S66	S67	S68	S69	S70	S71	S73	S74	S75	S76	S88	S89	S90	S91	S94
S95	S98	S99	T01	T02	T04	T07	T08	T09	T10	T13	T18	T20	T22	T23	T25	T26	T28	T29
T30	T33	T35	T38	T40	T43	T45	T48	T50	T51	T53	T56	T58	T59	T60	T62	T63	T64	T65
T66	T67	T68	T69	T70	T71	V10	V11	V12	V13	V14	V15	V16	V17	V18	V19	V20	V21	V22
V23	V24	V25	V26	V27	V28	V29	V30	V35	V39	V40	V41	V42	V44	V47	V49	V52	V54	V55
V60	V61	V62	V63	V64	V65	V66	V67	V68	V70	V71	V72	V73	V74	V75	V77	V78	V80	V81
V82	V84	V85	V86	V87	V88	V89	V90	V91	V92	V93	V94	V96	V97	V98				

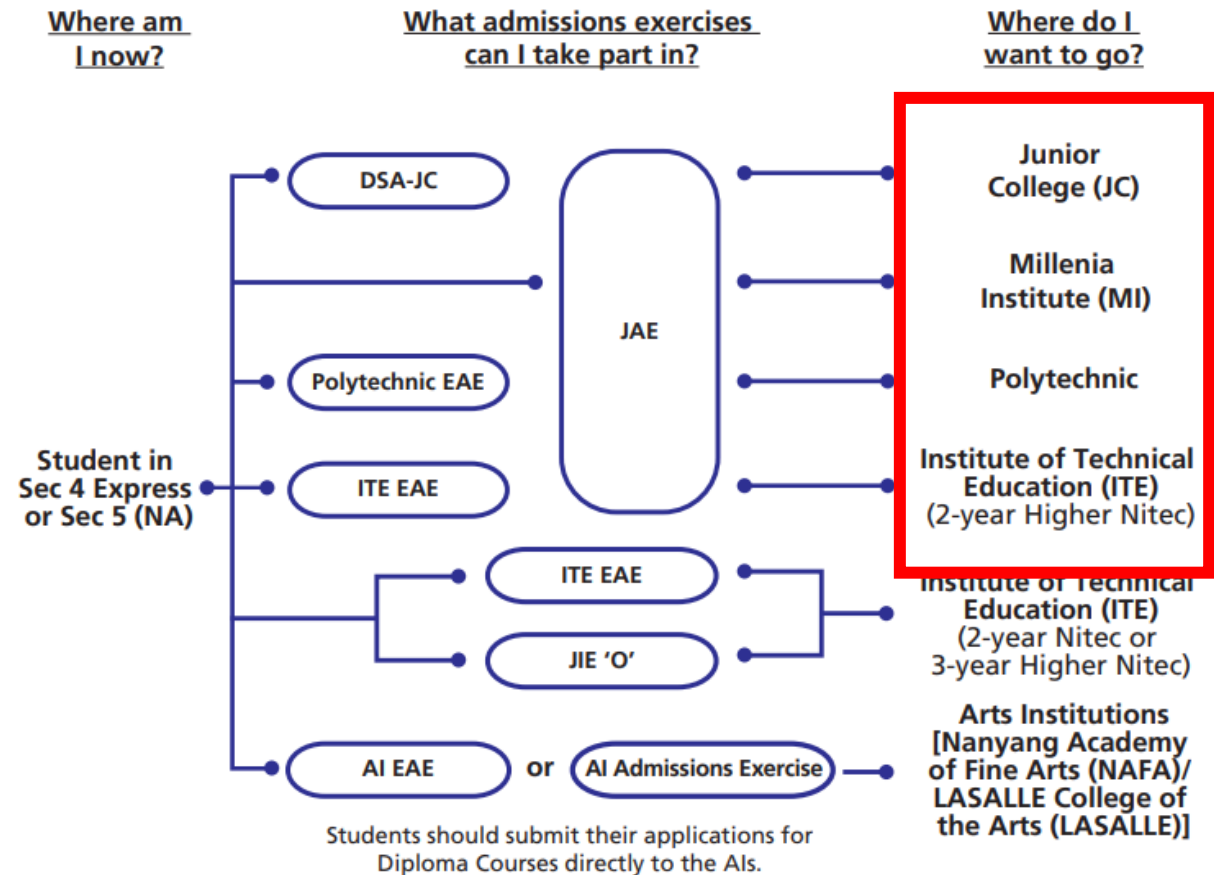
Course codes starting with:
 C - Nanyang Polytechnic
 N - Ngee Ann Polytechnic
 R - Republic Polytechnic
 S - Singapore Polytechnic
 T - Temasek Polytechnic
 V - Institute of Technical Education (ITE)



Admissions Exercise for O-Level students

Joint Admissions Exercise (JAE)

- The JAE-IS will be accessible from 4:00pm on Friday, 10 January 2025, to 4:00pm on Wednesday, 15 January 2025 for applicants to submit their course choices through the JAE website at www.moe.gov.sg/jae.
- Applicants are strongly encouraged to use the JAE worksheet (www.moe.gov.sg/jaeworksheet) before submitting their online application.



DSA: Direct School Admission
JAE: Joint Admissions Exercise
AI: Arts Institution

EAE: Early Admissions Exercise
JIE: Joint Intake Exercise

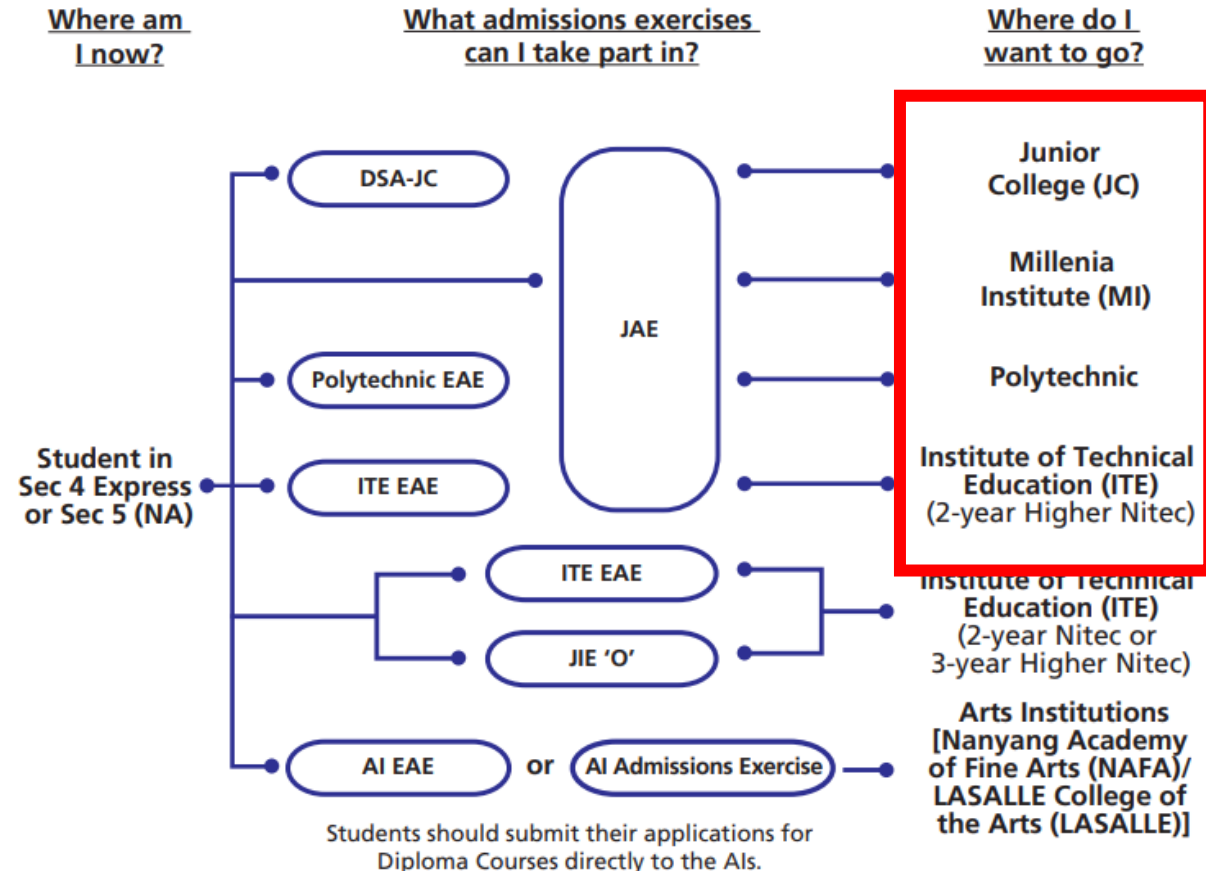


Admissions Exercise for O-Level students

Joint Admissions Exercise (JAE)

Applicants can find more information on the following MOE websites:

- JAE website for more details on the JAE (www.moe.gov.sg/jae)
- SchoolFinder for details of the offerings by and previous entry score ranges for JCs and MI (www.moe.gov.sg/schoolfinder)
- CourseFinder for courses offered by the polytechnics and ITE, based on aggregate type and area of interest (www.moe.gov.sg/coursefinder)



DSA: Direct School Admission
JAE: Joint Admissions Exercise
AI: Arts Institution

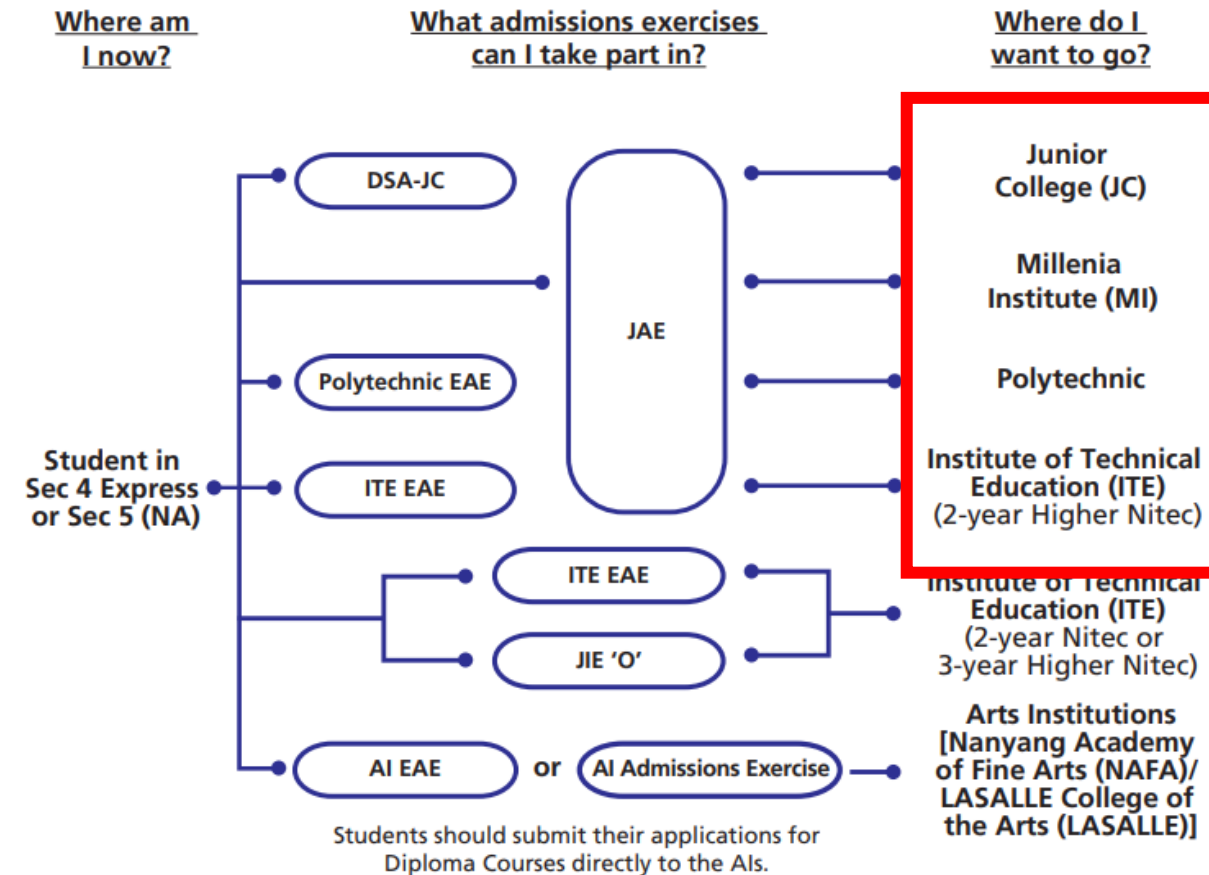
EAE: Early Admissions Exercise
JIE: Joint Intake Exercise

Admissions Exercise for O-Level students

Joint Admissions Exercise (JAE)

The posting results of the JAE application are scheduled for release on **Tuesday, 4 February 2025, 9:00 am** through the following modes:

- Short Message Service (SMS) to the Singapore mobile phone number provided by the applicant during application
- JAE-IS, which is accessible through the JAE website



DSA: Direct School Admission
JAE: Joint Admissions Exercise
AI: Arts Institution

EAE: Early Admissions Exercise
JIE: Joint Intake Exercise



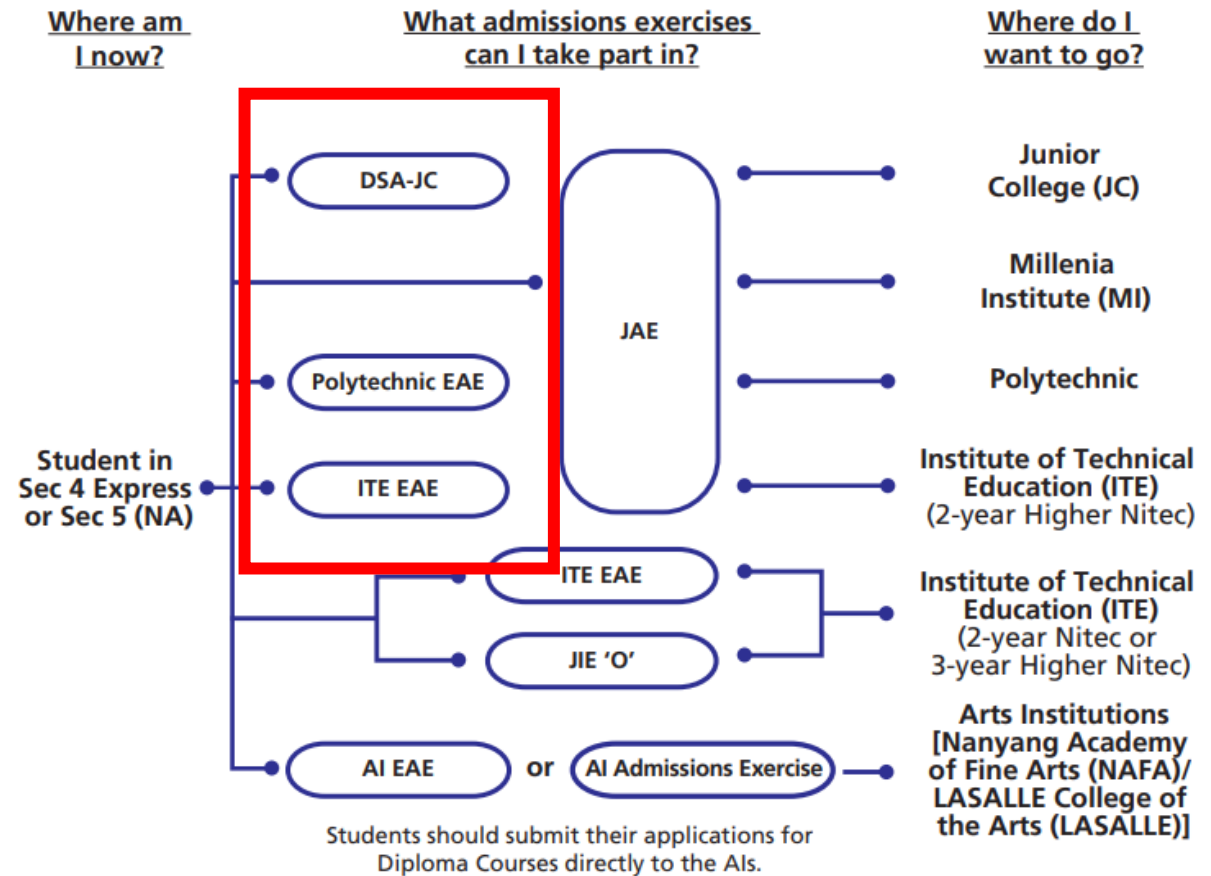
Admissions Exercise for O-Level students

Joint Admissions Exercise (JAE)

Successful admission for

- Junior College (DSA-JC)
- Polytechnic (EAE)
- ITE (EAE)

are not eligible to participate in JAE.



DSA: Direct School Admission
JAE: Joint Admissions Exercise
AI: Arts Institution

EAE: Early Admissions Exercise
JIE: Joint Intake Exercise



Details of Admissions Exercises

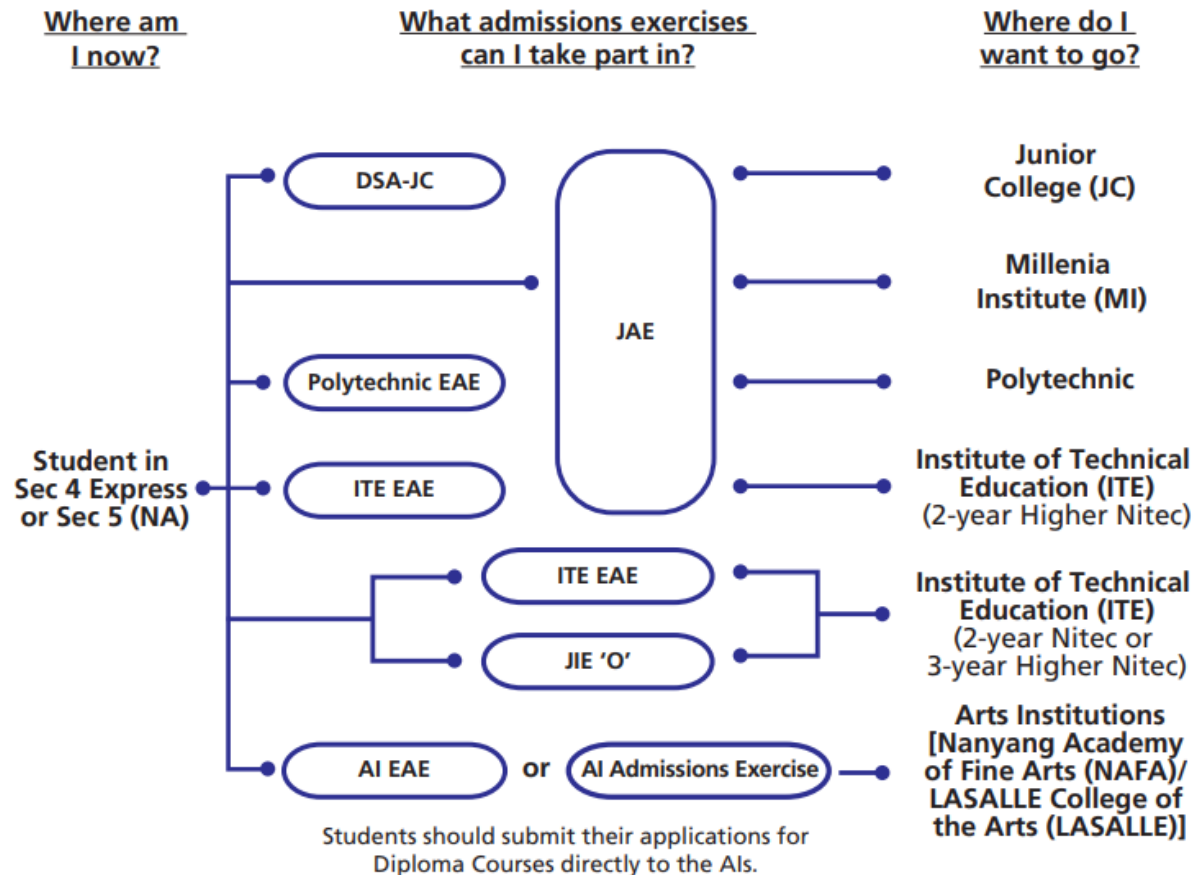
You can find the details of the various admissions exercises from the **Post-Secondary Admissions Exercises booklet** that can be downloaded from:

<https://www.moe.gov.sg/post-secondary/admissions>

- JAE
- JIE 'O'
- LASALLE
- NAFA



Post-Secondary Admissions Exercises for O-Level Students



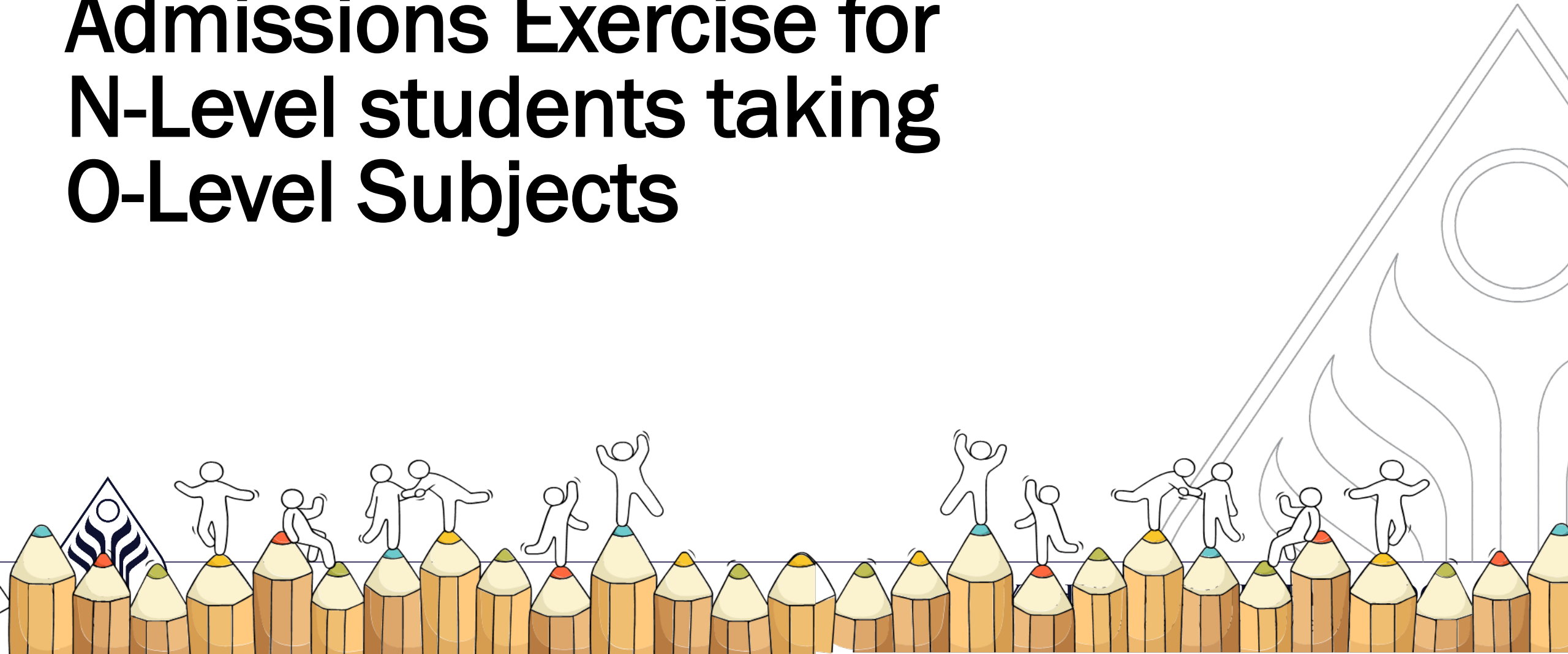
<https://www.moe.gov.sg/post-secondary/admissions>

For the list of Nitec/Higher Nitec courses, please visit <https://www.ite.edu.sg/courses/full-time-courses/nitec-and-3-year-higher-nitec>.

DSA: Direct School Admission
JAE: Joint Admissions Exercise
AI: Arts Institution

EAE: Early Admissions Exercise
JIE: Joint Intake Exercise

Admissions Exercise for N-Level students taking O-Level Subjects

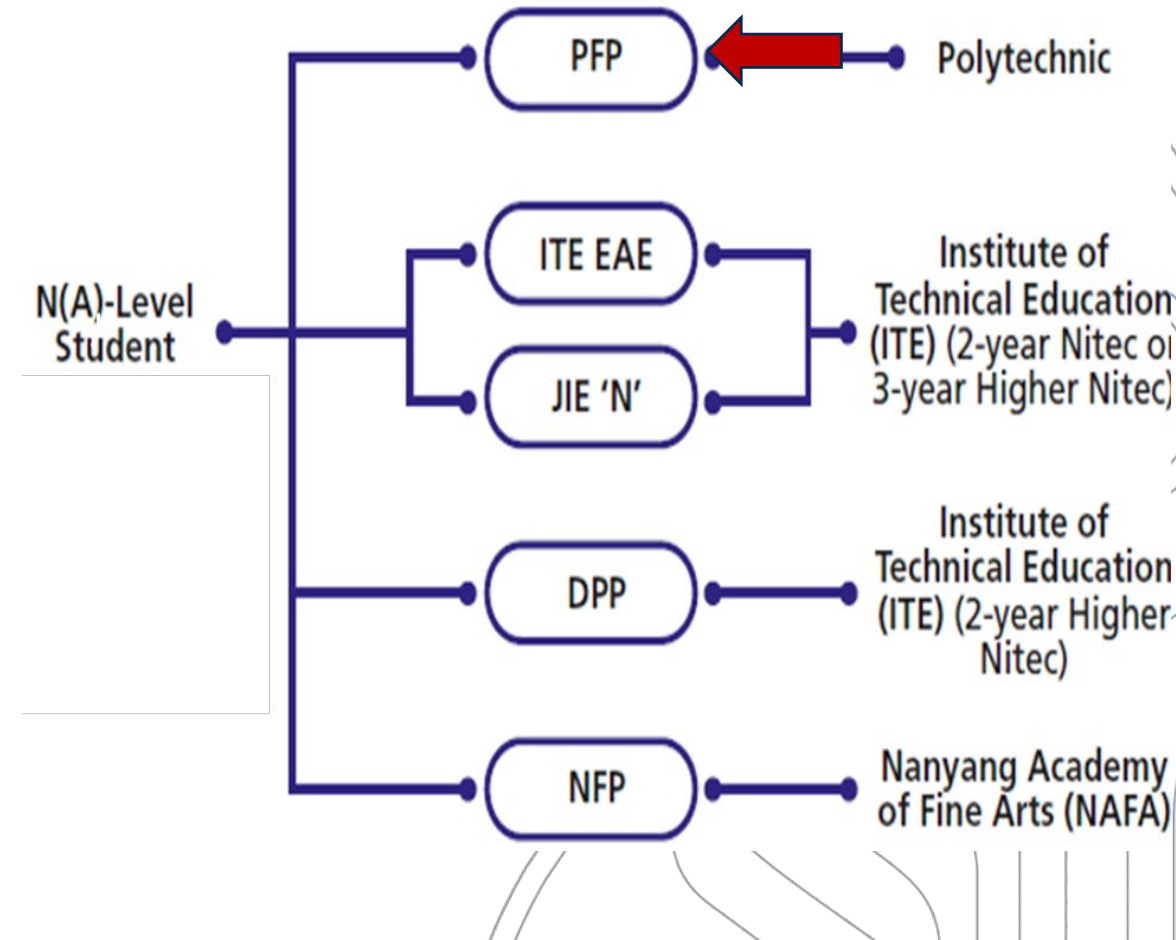


Admissions Exercise for N-Level students

Polytechnic Foundation Programme (PFP)

N Level students taking O level subjects may now start to apply for PFP.

- Registration opens from Friday, **10 January 2025 at 2:00 pm** to Wednesday, **15 January 2025 at 4:00 pm**.



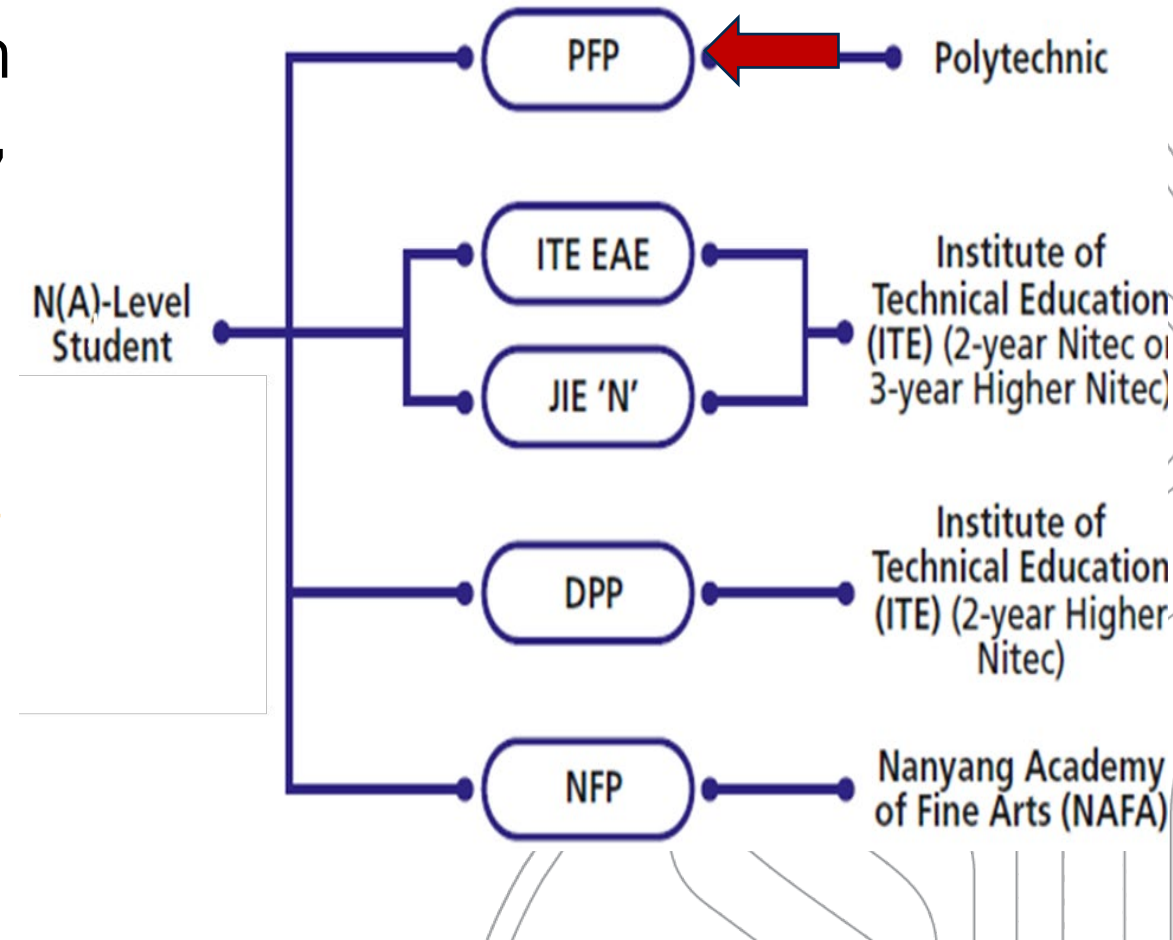
Admissions Exercise for N-Level students

Polytechnic Foundation Programme (PFP)

The posting results of the PFP application are scheduled for release on **Wednesday, 22 January 2025, 1:30 pm**

- More information can be found at this website:

https://pfp.polytechnic.edu.sg/PFP/pfp_application.html

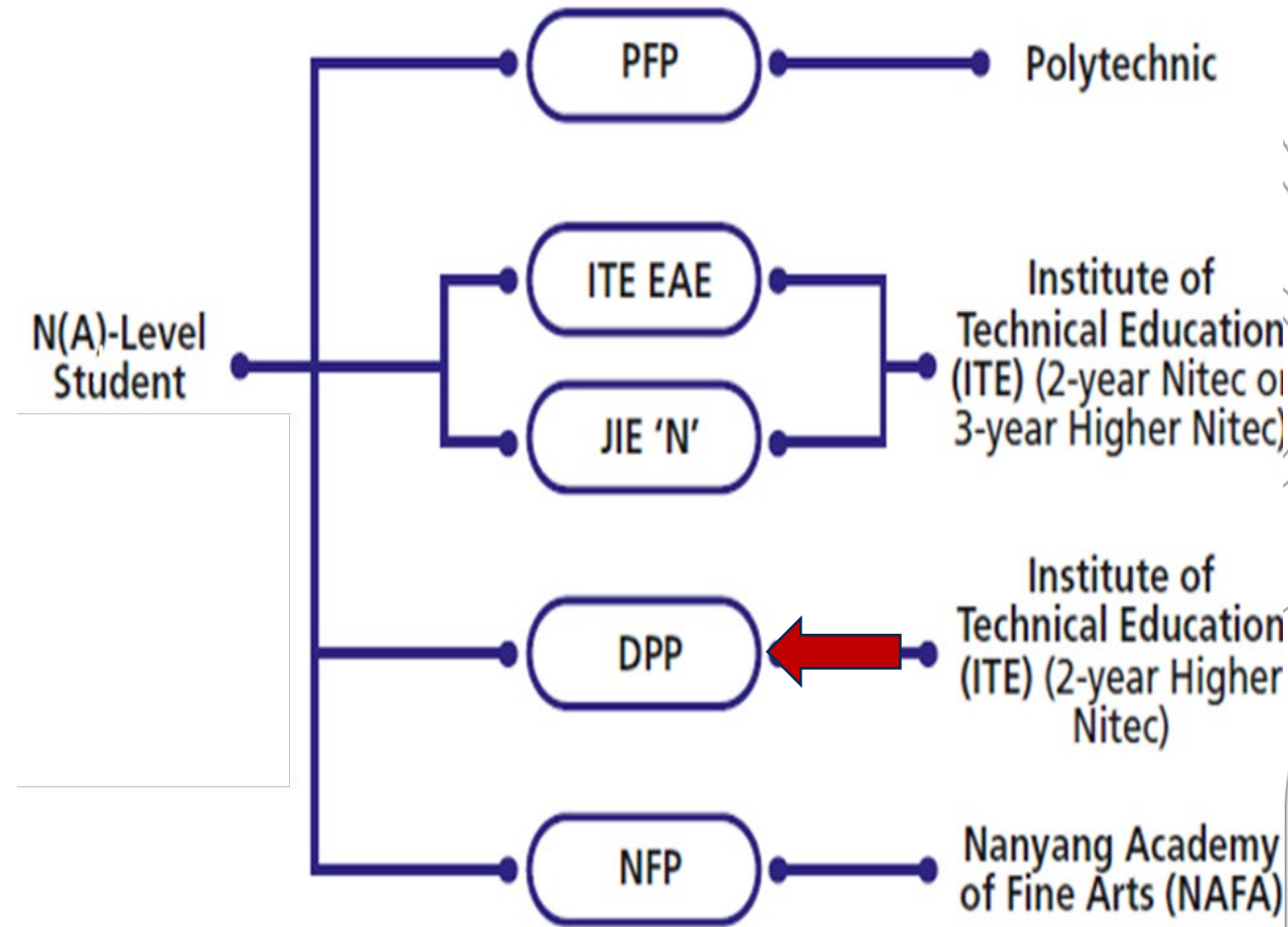


Admissions Exercise for N-Level students

Direct-Entry-Scheme to Polytechnic Programme (DPP)

N Level students taking O level subjects may now start to apply for DPP (final phase)

- The final application phase will open from **Friday, 10 January 2025** to **Tuesday, 14 January 2025**.

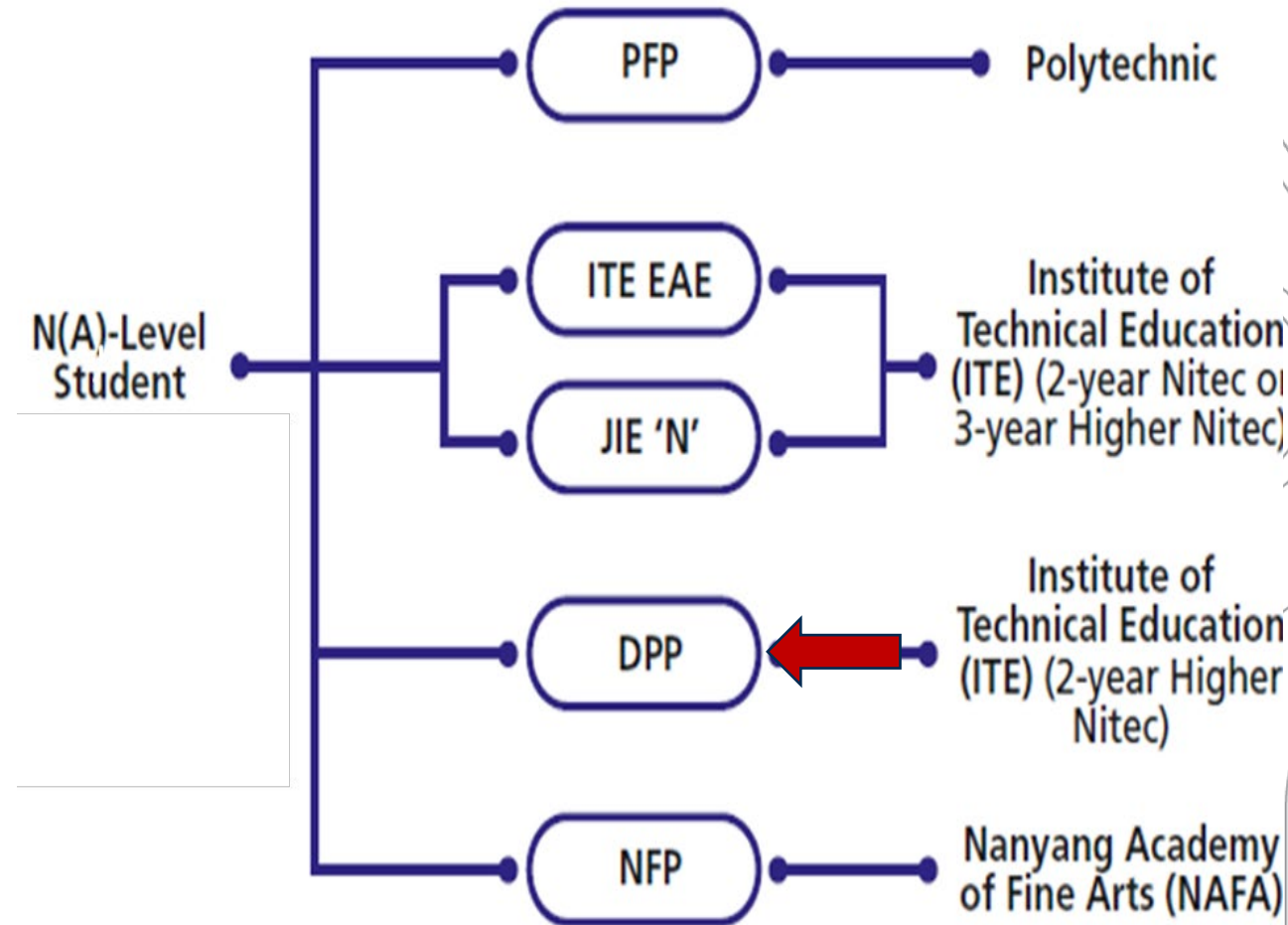


Admissions Exercise for N-Level students

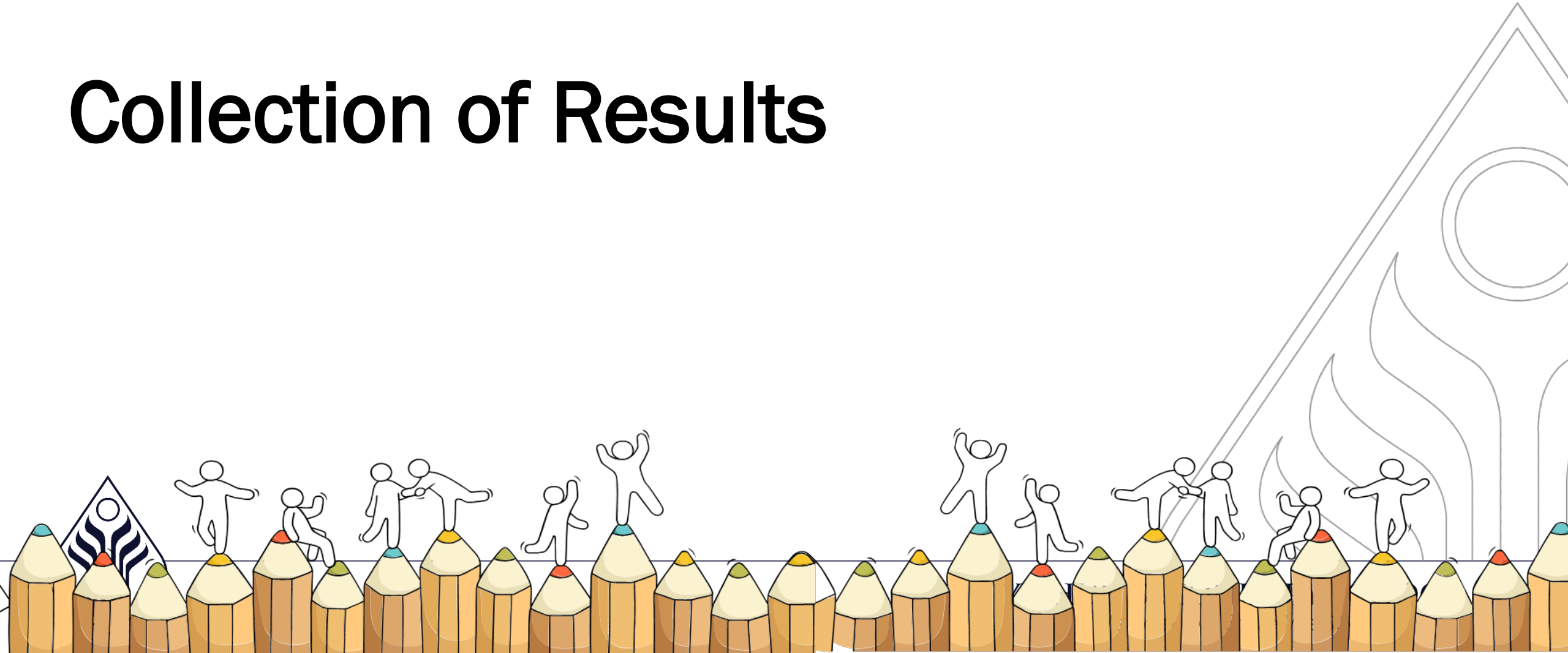
Direct-Entry-Scheme to Polytechnic Programme (DPP)

Acceptance of Offer will be between Friday, 17, January 2025 to Tuesday, 21 January 2025.

- More information can be found at: <https://www.ite.edu.sg/apply-for-ITE-courses/dpp>



Collection of Results



What should be collected?

- Result Slip
- Exam Certificate
- Form A (will be sent via email/downloaded via JAE-IS)
- Form P (for PFP eligible students)



Appeal for review of results

- You may request for the appeal form through your form teacher.
- All appeals by candidates together with the payment of appeal fees must be submitted through schools by **Wednesday, 15 January 2025, 4:00 pm**
- Late applications will not be considered.
- Payment can be made by cash or cheque at the general office.

Type of appeal	Fees (inclusive of GST)
Individual Appeal	S\$114.45
Group Appeal	S\$713.95 (for the first five candidates) S\$103.55 (for each additional candidate up to a maximum of 15 candidates)



Outcome of Appeal for review of results

- The outcome of the Individual Appeal is expected to be released to schools by **Monday, 24 February 2025** via email.
- The outcome of the Group Appeal is expected to be released to schools by **Mid-March 2025** via email.

Type of appeal	Fees (inclusive of GST)
Individual Appeal	S\$114.45
Group Appeal	S\$713.95 (for the first five candidates) S\$103.55 (for each additional candidate up to a maximum of 15 candidates)



Appeal for review of results

- The candidate will be informed of the outcome via a letter through the school.
- No report on the candidate's performance will be provided.

Type of appeal	Fees (inclusive of GST)
Individual Appeal	S\$114.45
Group Appeal	S\$713.95 (for the first five candidates) S\$103.55 (for each additional candidate up to a maximum of 15 candidates)



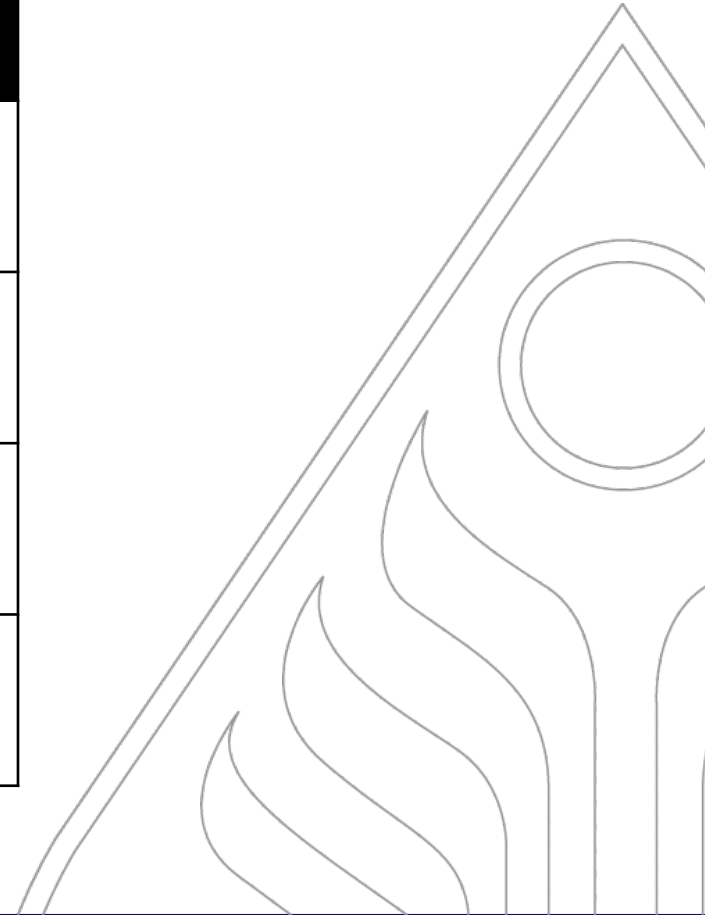
Certificate Amendment Request

- Request to re-print if the names were printed wrongly due to misspelling.
- Amendment fee of \$50 (inclusive of GST) for each certificate to be printed.
- Request to be submitted by **Wednesday, 15 January 2025, 4:00pm**
- Approach form teacher for submission of request



Summary of important dates

Event	Dates
Appeal of results	until Wednesday, 15 January 2025, 4:00pm
Amendment of certificate	until Wednesday, 15 January 2025, 4:00pm
Application for JAE	from Friday, 10 January 2025, 4:00pm to Wednesday, 15 January 2025, 4:00pm
Release of JAE posting	Tuesday, 4 February 2025, 9:00 am



Summary of important dates

Event	Dates
PFP application	from Friday, 10 January 2025, 1:30pm to Wednesday, 15 January 2025, 4:00pm
PFP posting results	Wednesday, 22 January 2025, 1:30 pm
DPP (final phase application)	from Friday, 10 January 2025, to Tuesday, 14 January 2025
DPP Results of Final Application and Course Acceptance	from Friday, 17 January 2025, to Tuesday, 21 January 2025

More information can be found at: <https://pfp.polytechnic.edu.sg> and <https://www.ite.edu.sg/apply-for-ITE-courses/dpp>





**The O-Level
examination is not
the destination.**

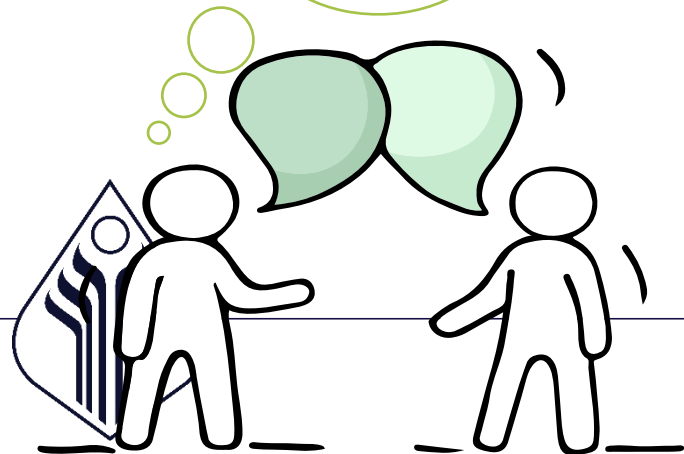
**It is part of your
education journey.**



Reaching out for support is a sign of strength

If you have questions about your options or are not coping well, you can reach out to trusted adults such as a parent/guardian, teacher, school Counsellor or ECG Counsellor. You can also talk to a trusted friend.

*Who can we
go to for ECG
advice?*



Make an appointment to speak
with your ECG Counsellor in school

OR

Make an ECG counselling
appointment via the
ECG Centre @ MOE

<https://go.gov.sg/moe-ecg-centre>



ND
e Stri



Education and Career Guidance (ECG) Support for 'O' Level Students

MOE Education and Career Coach will be in YSS (*Hall*) on:

- **10 Jan 2025 (Fri), 2pm to 4.30pm**

Our ECG Counsellor, Ms Teoh, will be in YSS on:

- **14 Jan 2025 (Tue), 9am to 5pm (Face-to-face or Online)**
- **15 Jan 2025 (Wed), 9am to 12pm (Online only)**

Venue: **The Space (Library)**

Students and parents may make an appointment at:

<https://go.gov.sg/ecgcmsteoh>

Or scan the QR Code →

Or email Ms Teoh at teoh_fan_yun@schools.gov.sg

Please have this ready during the session

- Result Slip & Form A



<https://go.gov.sg/ecgcmsteoh>

2025 Open Houses Dates

Anglo Chinese Junior College	13 January 2025, 12pm – 5pm	Nanyang Junior College	11 January 2025, 9am – 3pm
Anglo-Chinese School (Independent) (IBDP)	13 January 2025, 10am – 11.30am	National Junior College	11 January 2025, 10am – 2pm
Anderson Serangoon Junior College	14 January 2025, 10am – 5pm	Raffles Institution	14 January 2025, 10am – 2.30pm
Catholic Junior College	11 January 2025, 10am – 3pm	River Valley High School	13 January 2025, 2pm – 5pm
Dunman High School	11 January 2025, 9am – 1pm	St Andrew's JC	11 January 2025, 9am – 3pm
Eunoia Junior College	11 January 2025, 10am – 2 pm	St Joseph's Institute (IBDP)	11 January 2025, 9am – 3pm
Hwa Chong Institution	14 January 2025, 12pm – 4pm	Tampines Meridian Junior College	11 January 2025, 10am – 3pm
Jurong Pioneer Junior College	13 January 2025, 9am – 4pm	Temasek Junior College	14 January 2025, 12.30pm – 4pm
Millennia Institute 3 Year Programme	14 January 2025, 12pm – 5pm	Victoria Junior College	11 January 2025, 9am – 1pm
		Yishun Innova Junior College	13 January 2025, 10am – 5 pm

Nanyang Polytechnic	9 & 11 January 2025, 10am - 6pm; 10 Jan 2025, 12pm – 10pm
Ngee Ann Polytechnic	8-11 January 2025, 10am - 6pm
Republic Polytechnic	9-11 January 2025, 10am - 6pm
Singapore Polytechnic	9-11 January 2025, 10am - 6pm
Temasek Polytechnic	9 & 11 January 2025, 10am - 6pm; 10 Jan 2025, 10am – 8.30pm
LASALLE College of the Arts	17 January 2025, 1pm - 6 pm; 18 January 2025, 11am - 5pm
Nanyang Academy of Fine Arts (NAFA)	17 - 18 January 2025, 10am - 5pm

The Open Houses dates & timing may change. Pls check the school's websites beforehand or contact them directly.

Having difficult emotions during a stressful and uncertain period is normal. Keep a look out for some of these signs:

Keep a lookout for some of these signs in your peers or in yourself

How can we support one another?



**D
I
S
T
R
E
S
S**

Deliberately avoiding others

Increased irritability, restlessness, agitation, stress and anxiety

Sending or posting moody messages on social media

Talking about death or dying

Reacting differently or gradually losing interest in things they used to like

Eating more than usual or having a much reduced appetite

Sleep pattern changes with difficulty falling asleep or oversleeping

Slowing down of energy levels

If you notice any of these signs in yourself or your friends, **have a chat with your School Counsellor or teacher,**

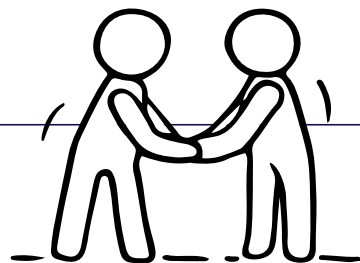
Or contact SOS 24-hour hotline at **1767** or SOS 24-hour CareText Whatsapp at **91511767**
For cyber wellness related matters, call Help123 at **1800-612-3123*** or email **hello@help123.sg**

**available only from Mon to Fri (excluding Public Holidays), from 9am - 6pm.*

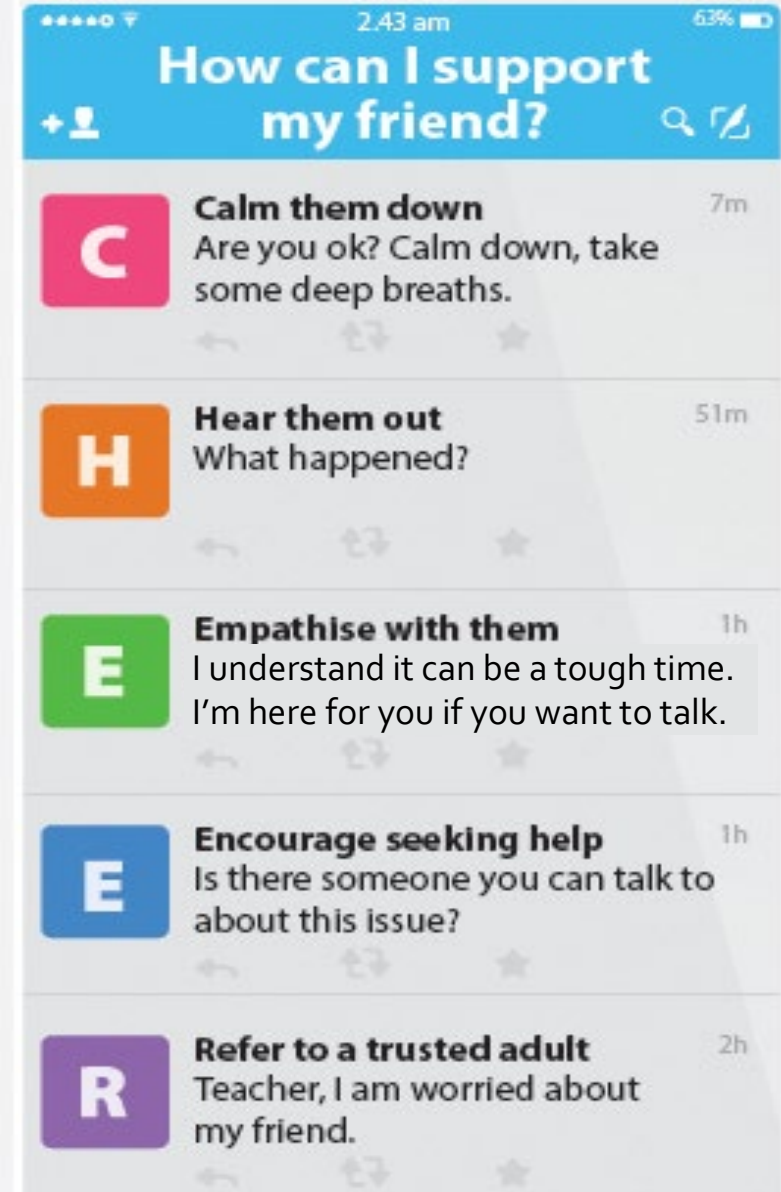


Supporting Your Friend

- We may each experience different emotions upon receiving the results.
- You can share your friends' joy by congratulating them or give words of encouragement to friends who may be disappointed with their results.



Keep a lookout for your friends in distress. You can support them in the following ways:



Thank you



CONFIDENTIAL