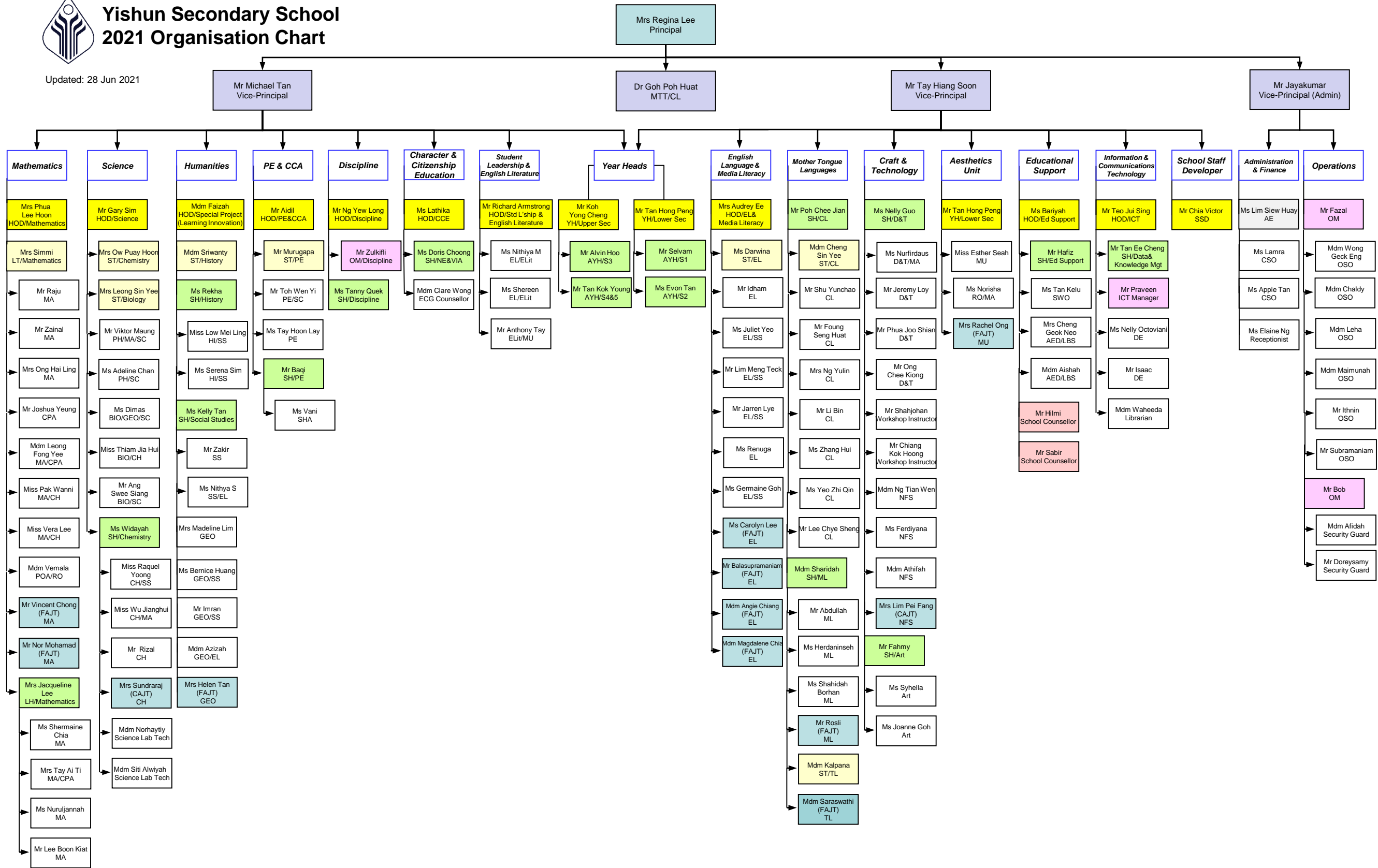




# Yishun Secondary School 2021 Organisation Chart

Updated: 28 Jun 2021



**Relief Teachers**  
 Mrs Kalaiselvi – TL  
 Mdm Birundha – TL  
 Ms Zhu Youying – CL

**Legend (Subject)**  
 AM: Additional Mathematics  
 BIO: Biology  
 CL: Chinese Language  
 D&T: Design & Technology  
 ELit: English Literature  
 NFS: Nutrition & Food Science  
 MA: Mathematics  
 MU: Music  
 PH: Physics  
 RO: Retail Operations  
 SS: Social Studies  
 ART: Art  
 CH: Chemistry  
 CPA: Computer Applications  
 EL: English Language  
 GEO: Geography  
 ML: Malay Language  
 PE: Physical Education  
 POA: Principles of Accounts  
 TL: Tamil Language

**Legend (Designation)**  
 Ag: Acting  
 AED/LBS: Allied Educator/Learning & Behavioural Support  
 CAJT: Contract Adjunct Teacher  
 DE: Desktop Engineer  
 FAJT: Flexi-Adjunct Teacher  
 LH: Level Head  
 MTT: Master Teacher  
 OSO: Operations Support Officer  
 SHA: School Health Advisor  
 ST: Senior Teacher  
 YH: Year Head  
 AE: Administrative Executive  
 AYH: Assistant Year Head  
 CSO: Corporate Support Officer  
 ECG: Educational Counselling & Guidance  
 HOD: Head of Department  
 LT: Lead Teacher  
 OM: Operations Manager  
 OSO: Subject Head  
 SSD: School Staff Developer  
 SWO: Student Welfare Officer